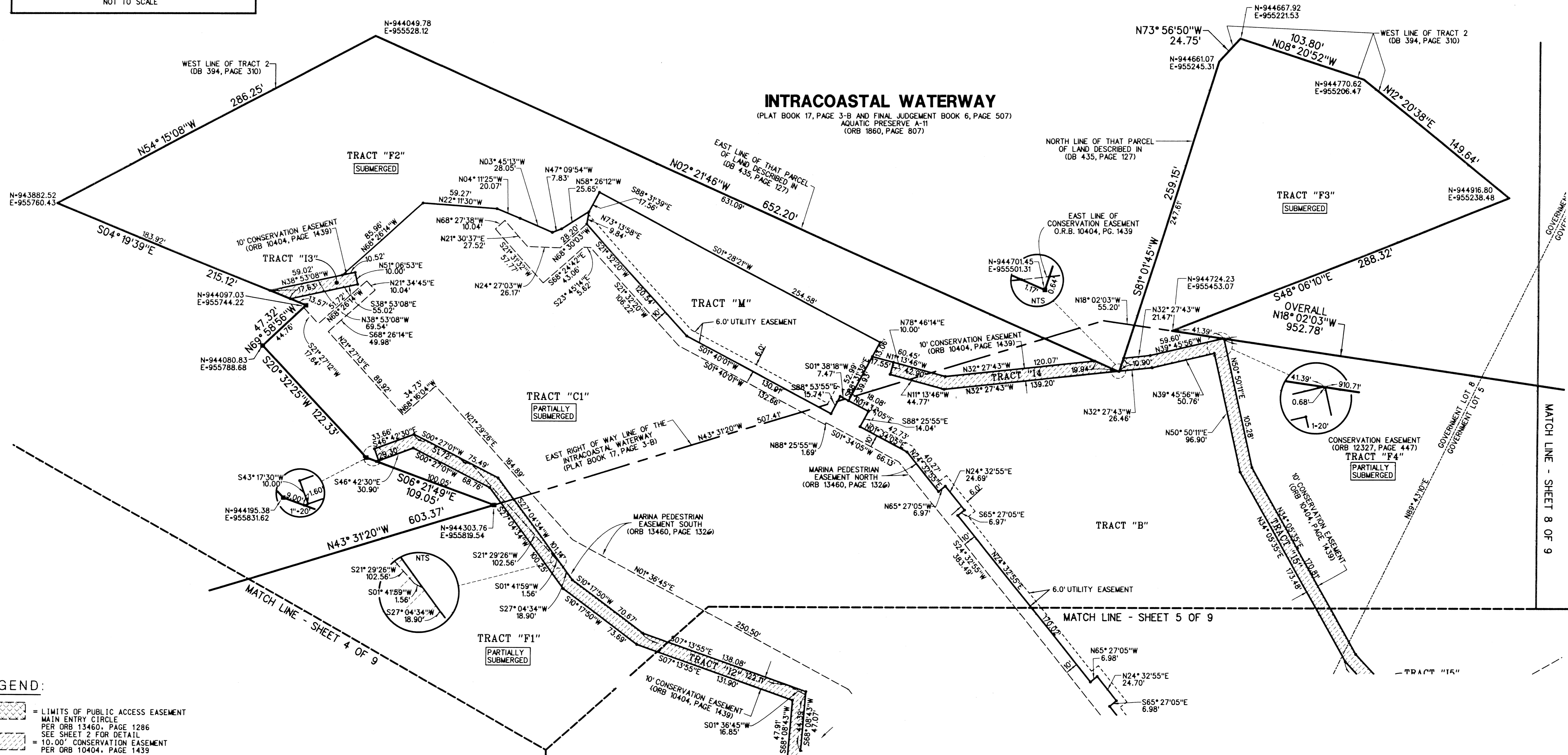
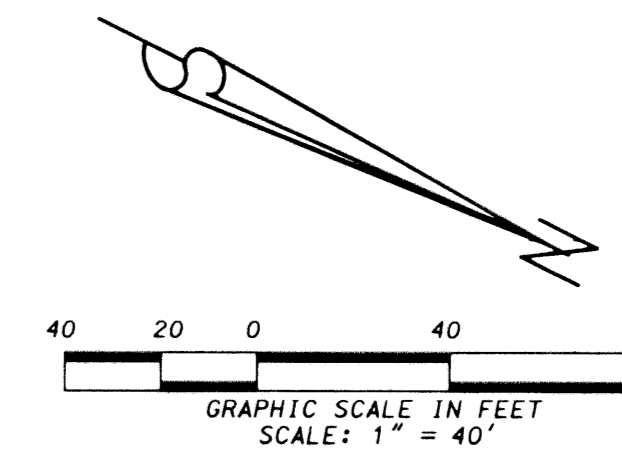
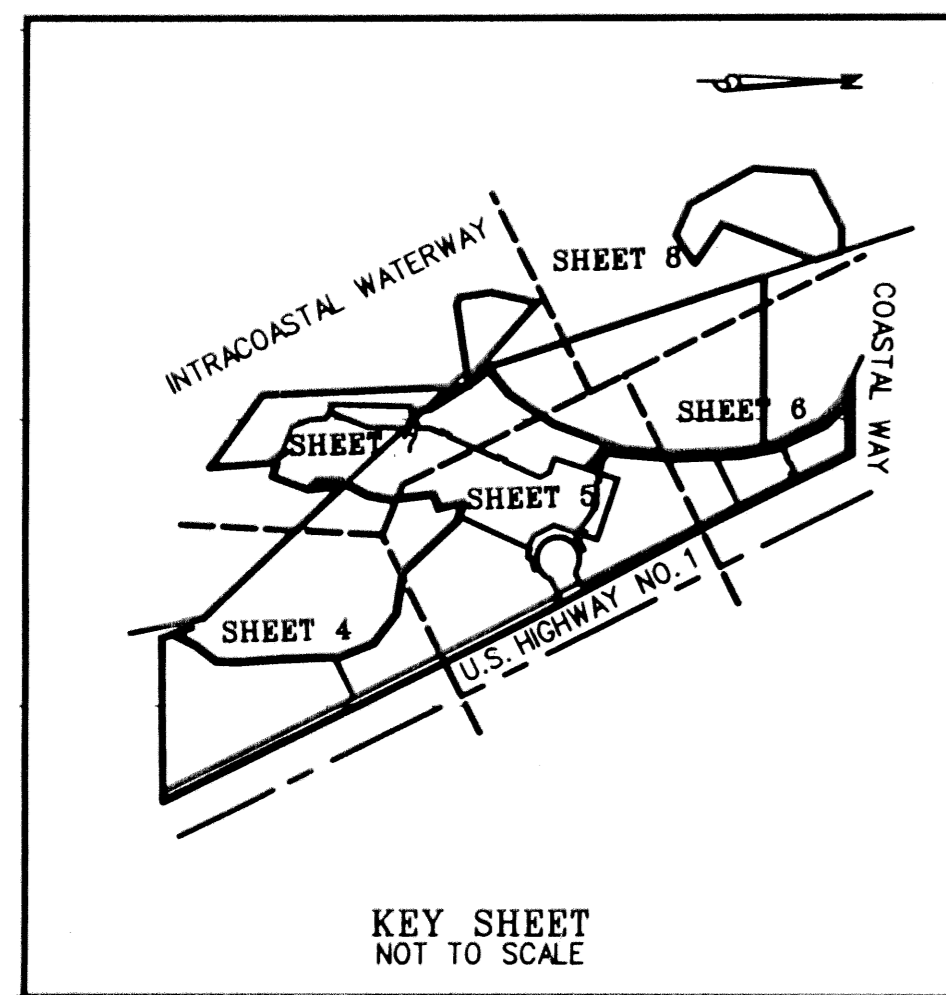


JUPITER YACHT CLUB

BEING A PORTION OF SECTION 6, TOWNSHIP 41 SOUTH, RANGE 43 EAST,
TOWN OF JUPITER, PALM BEACH COUNTY, FLORIDA

FEBRUARY, 2002

SHEET 7 OF 9



LEGEND:

- = LIMITS OF PUBLIC ACCESS EASEMENT
- = MAIN ENTRY CIRCLE PER ORB 13460, PAGE 1286 SEE SHEET 2 FOR DETAIL
- = 10.00' CONSERVATION EASEMENT PER ORB 10404, PAGE 1439

ABBREVIATIONS:

- FND = FOUND
- FPL = FLORIDA POWER & LIGHT
- NTS = NOT TO SCALE
- ORB = OFFICIAL RECORD BOOK
- PB = PALM BEACH
- PB = POINT OF BEGINNING
- POC = POINT OF COMMENCEMENT
- RB = RADIAL BEARING
- SRD = STATE ROAD DEPARTMENT
- SF = SQUARE FEET
- TL = TIE LINE



675 West Indiantown Road, Suite 200,
Jupiter, Florida 33458 TEL. 561-746-8454

CAD: K:\UST\064143\JYCMG01\2717306\ SHEET7.DGN		
REF: K:\UST\064143\JYCMG01\2717306\ 2717306.DGN		
FLD. -	FB. PG.	JOB 97-271-306
OFF. R.W.		DATE 10-04-01
CKD. D.C.L.	SHEET 7 OF 9	DWG. D97-271P